

Casualties: NTSB cites shortfalls in Navy oversight, training in fatal McCain collision

PROFESSIONAL

MARINER

JOURNAL OF THE MARITIME INDUSTRY

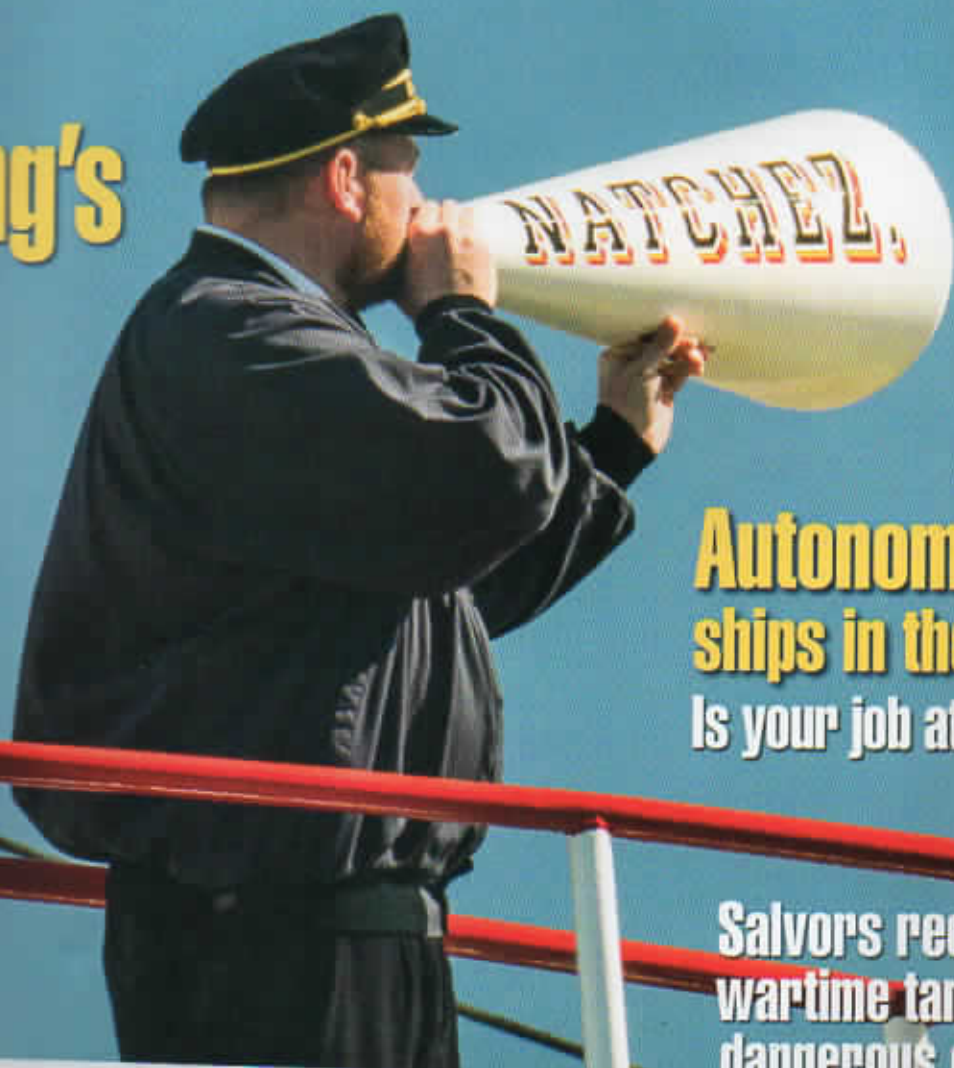
Issue #228
October/November 2019
U.S. \$4.99
Canada \$4.99

**Flooding's
heavy
toll on
tows**

**Tug crew
takes on
Hawaii's
big swells**

**Autonomous
ships in the US:
Is your job at risk?**

**Salvors recover
wartime tanker's
dangerous cargo**



*****FIRM 90745
PMR 4703488
FEB 20 P2 B121
21121 MARBELLA AVE CO B
CARSON CA 90745

A MARINER'S NOTEBOOK
Talk

Contents

Professional Mariner October/November 2019

Towing

- 14** Hawaiian night run swell stuff for Young Brothers tug crew

BY CASEY CONLEY



Trends & Currents

- 37** Market grows for monitoring as operators look to squeeze fuel savings

BY ALAN R. EARLS



Industry Signals

- 4** 'Unprecedented' flooding idles barges, raises dredging concerns
- 6** Inspection reveals open lifeboat problems, but ban still not in sight
- 8** Hands-free mooring now fully deployed at Seaway locks
- 10** Great Lakes pilot rates rise by double digits for fifth year in a row
- 12** IMO pushes for gender equality, but progress slow for women at sea



Correspondence

- 40** Autonomous ships in the US: What's next, and is your job at stake?

BY CAPT. MARC DEGLINNOCENTI

A Mariner's Notebook

- 48** Put accent on respect, courtesy for effective communication at sea

BY CAPT. KELLY SWEENEY



Contents

Professional Mariner October/November 2019



20 193 dives later, World War II wreck gives up its dangerous cargo

BY BILL BLEYER

Maritime Casualties

- 26 NTSB faults Navy oversight, training in fatal *McCain* collision
- 28 Casualty Briefs
- 30 Mariner dies aboard Military Sealift Command ship near Bahrain
- 31 Tugboat captain dies after falling overboard near Nome
- 33 Improper lookout cited in open-water collision near Long Island
- 35 Dredge contractor's 'ineffective oversight' linked to pipeline explosion



Vessels at Work

- 24 Narragansett's new fireboat built to handle every hazard

BY BRIAN GAUVIN

ON THE COVER

Capt. Steven Kinsulin takes charge as the crew sets up the lines aboard the steamer *Natchez* for a cruise on the Mississippi River at New Orleans. Constructed in 1975, it is one of two steam-powered sternwheelers left on the river. *Natchez* is powered by engines built in 1925 for the tugboat *Clifton*, which moved steel on the Monongahela River. Photo by Brian Gauvin

